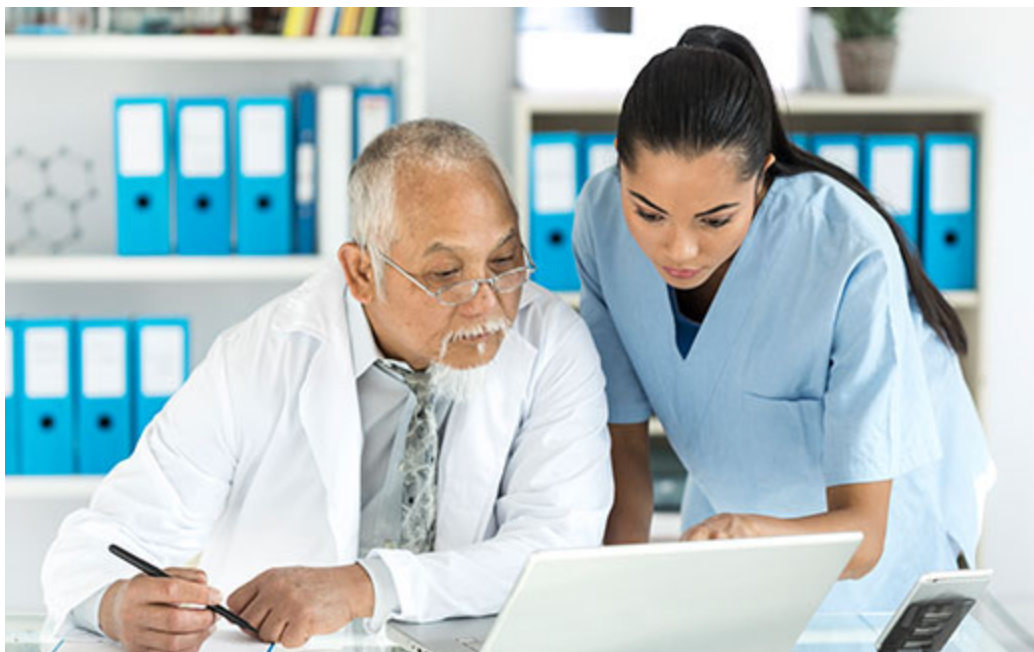


# Single access point for BCBSAZ proprietary medical policies

 [pages.azblue.com/Proprietary-medical-policy-migration-in-process---MAY-2022.html](https://pages.azblue.com/Proprietary-medical-policy-migration-in-process---MAY-2022.html)

[Sign in – Secure Provider Portal](#) 



Last year, we reinstated the azblue.com search tool for Blue Cross® Blue Shield® of Arizona (BCBSAZ) proprietary medical policies used for our commercial plans. Many of those policies are also available through the Change Healthcare InterQual® search tool on the secure provider portal ... but not for long!

 [In This Issue](#)

**Take a virtual tour of [member ID cards](#)**

We have started removing our proprietary policies from the InterQual tool, and soon all of our proprietary policies will only be available through our evidence-based criteria search tool at [azblue.com/BCBSAZpolicies](https://azblue.com/BCBSAZpolicies). The following medication policies have already been moved and are no longer available in the InterQual tool:

- Chimeric Antigen Receptor (CAR) T-Cell Therapy for Multiple Myeloma: Abecma® (idecabtagene vicleucel) [[PDF](#)]
- CAR T-Cell Therapy for Leukemia and Lymphoma: Breyanzi® (lisocabtagene maraleucel), Kymriah® (tisagenlecleucel), Tecartus™ (brexucabtagene autoleucel), Yescarta® (axicabtagene ciloleucel) [[PDF](#)]
- Intravenous Ketamine Infusion for Treatment of Off-Label Indications Including Psychiatric Disorders and Chronic Pain [[PDF](#)]
- Luxturna® (voretigene neparvovec-rzyl) [[PDF](#)]

The rest of our proprietary policies will be moved out of the InterQual tool within the next few months, when we update to the 2022 version of the InterQual policies we use.

## Applicable benefit plans

---

We develop proprietary policies for certain services and medications covered under the medical benefits in our commercial plans. These and the other nationally recognized policies we use (including eviCore, InterQual, American Specialty Health® [ASH], the National Comprehensive Cancer Network®, and BCBS Association) apply to these plans:

- Fully insured group plans
- Non-group plans for individuals under 65 and their families
- Most self-funded group plans (except those that use a third-party administrator [TPA]'s medical and administrative policies)

### *Exceptions*

The following types of plans may use medical policies that are different from the ones BCBSAZ uses:

- Self-funded group plans that involve a TPA
- BlueCard® (out-of-area) plans issued by other BCBS Plans
- Federal Employee Program® (FEP®) plans
- Medicare Advantage (MA) plans

## How to access medical policies for all lines of business

---

You can access most medical policies from our webpage at [azblue.com/medicalpolicies](https://azblue.com/medicalpolicies). Additional resources, including the InterQual search tool, are available on the secure azblue.com provider portal at "Practice Management > Medical Policies."

### Questions?

If you have questions, please reach out to your [provider liaison](#) or call Provider Partnerships at 602-864-4231 or 1-800-232-2345, ext. 4231.

---

InterQual is a registered trademark of Change Healthcare LLC and/or one of its subsidiaries.

Abecma is a registered trademark of Celgene Corporation, a Bristol-Myers Squibb company.

Breyanzi is a registered trademark of Juno Therapeutics, Inc., a Bristol-Myers Squibb company.

Kymriah is a registered trademark of Novartis.

Tecartus and Yescarta are registered trademarks of Kite Pharma, Inc., a Gilead company.

Luxturna is a registered trademark of Spark Therapeutics, Inc.

eviCore healthcare® is a separate, independent company contracted with BCBSAZ to provide prior authorization services to BCBSAZ providers and members. eviCore healthcare is a registered service mark of CareCore National, LLC.

BCBSAZ contracts with ASH, a separate, independent company, to provide the chiropractic network, covered chiropractic services, and related claim processing and appeal/grievance resolution.

The NCCN Guidelines are the proprietary and copyright-protected information of National Comprehensive Cancer Network, Inc.

---

Our members can take a digital ID card with them wherever they go with the MyBlue AZ<sup>SM</sup> mobile app.

